

## High-Pressure Cut-Off Valve



Type G PC S 032 K69 V01

- Function: 2/2 NC
- Medium: H<sub>2</sub>
- Rated voltage: 12 VDC / 24 VDC
- Actuation current: 2,9 A
- Holding current reduction to: 1,2 A
- Duty cycle: 100 % ED with holding current reduction
- Rated working pressure (NWP): 0 ... 700 bar
- Maximum pressure (MAWP): 1050 bar
- Nominal width main seat: 2,7 mm
- Nominal width pilot seat: 0,2 mm
- Kv: > 0,11 m<sup>3</sup>/h
- Leakage (internal/external):: 2x10<sup>-4</sup> mbar l/s
- Ambient temperature: -40°C up to +85°C
- Protection class: IP6K9K
- Service life: > 75.000 operations
- Testing according to EC79

### Options on request:

- Various electrical plug connections
- ATEX version for stationary applications
- Customer-specific mechanical interface
- Version for natural gas

### Special features:

- Small size

## Safety Shut-Off Valve



Type G PC S 040 K69 V01 / V03

- Function: 2/2 NC
- Medium: H<sub>2</sub>, N<sub>2</sub>, air
- Rated voltage: 12 VDC / 24 VDC
- Actuation current: < 1,5 A / < 0,8 A
- Holding current reduction to: < 0,8 A / < 0,4 A
- Duty cycle: 100 % ED with holding current reduction
- Rated working pressure (NWP): 0 ... 21 bar
- Maximum pressure (MAWP): 25 bar
- Nominal width main seat: 8 mm
- Kv: > 0,9 m<sup>3</sup>/h
- Nominal width pilot seat: 1,2 mm
- Leakage (internal/external): 1 x 10<sup>-4</sup> mbar l/s
- Ambient temperature: -40°C up to +85°C
- Protection class: IP6K9K
- Service life: > 50.000 operations
- Testing according to EC79

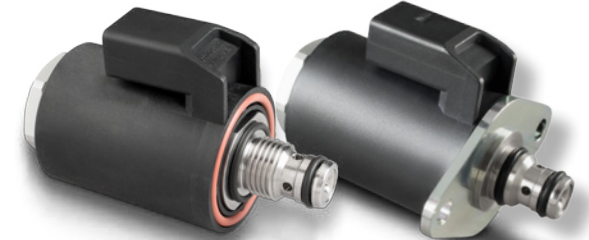
### Options on request:

- Various electrical plug connections
- ATEX version for stationary applications
- Customer-specific mechanical interface
- Version for natural gas

### Special features:

- Two-step opening to avoid pressure shocks
- Seal seat optimized for cryogenic temperature

## Flow Control Valve



Type G PC P 040 K69 V01 / V03 / V04

- Function: prop. flow control 2/2 NC
- Medium: H<sub>2</sub>
- Rated voltage: 12 VDC / 24 VDC
- Limit current: 1,6 A
- Duty cycle: 100 % ED
- Nominal width: 2,8 mm / 3,3 mm
- Rated working pressure (NWP): 16 bar
- Maximum pressure (MAWP): 25 bar
- Kv: > 0,23 m<sup>3</sup>/h / 0,32 m<sup>3</sup>/h
- Leakage (internal/external): 1x10<sup>-5</sup> mbar l/s
- Linearity: < 5% F.S.
- Hysteresis: < 15%, F.S. @350Hz PWM
- Ambient temperature: -40°C up to + 125°C
- Protection class: IP6K9K
- Service life: > 3 Mio. switching cycles, > 25 Mio. control procedures

### Options on request:

- Component groups with valves and sensors
- Various electrical plug connections
- Other control pressure ranges
- ATEX version for stationary applications
- Customer-specific mechanical interface
- Version for natural gas

### Special features:

- High control quality

# Purge / Drain Valve



## Type G PC S 028 K69 V...

- Function: 2/2 NC
- Medium: H<sub>2</sub>O, coolant, H<sub>2</sub>, air, neutral gases
- Rated voltage: 12 VDC / 24 VDC
- Max. actuation current: 2,9 A / 1,3 A
- Holding current reduction to: 0,4 A / 0,2 A
- Duty cycle: 100 % ED with holding current reduction
- Rated operating pressure (NWP): 3 bara
- Kv: 0,024 m<sup>3</sup>/h - 0,17 m<sup>3</sup>/h
- Nominal widths: 0,8 mm to 3mm
- Leakage (internal): < 1 ml/min
- Leakage (external): < 1 ml/min
- Ambient temperature: -40°C bis + 85°C
- Protection class: IP6K9K
- Service life: > 24 Mio. operations

### Options on request:

- Components with valves and sensors (water separator)
- Various plug connections

### Special features:

- Media separation

## Plants and Sales

Magnet-Schultz GmbH & Co. KG  
 Allgäuer Straße 30  
 D-87700 Memmingen  
 Phone +49 83 31 10 40  
 info@Magnet-Schultz.de  
 www.magnet-schultz.com



Headquarter Memmingen Sales | R&D | Production



Plant Memmingerberg R&D | Production



PREFAG, Walzbachtal  
 Sales | R&D | Production



Magnet- Schultz of America  
 Sales | R&D | Production



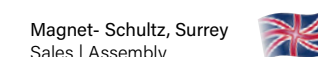
W.E. Schultz, Oberrindal  
 Sales | Production



Magnet- Schultz, Suzhou  
 Production



Magnet- Schultz, Italia  
 Sales



Magnet- Schultz, Surrey  
 Sales | Assembly



We focus on hydrogen ...

# GAS VALVES FOR MOBILE APPLICATIONS