

Plug connectors

12

Product group

Z KB X Z KB G

Designs

- 2 or 3 pole and protective contact
 - Z KB X 211 B01 / 3-polig
 - Z KB G 211 B01 / 2-polig with rectifier
- Square design
- Colour black

Construction

- Junction box with cable gland
- Fastening with central screw M3
- Connection with screw terminal
- Protection class according to DIN VDE 0470/DIN EN 60529 when properly installed: IP 65
- Cable gland can be rotated by 4 x 90° through the appropriate insertion of the contact carrier
- Delivery with sealing

Application examples

- Direct connection to the DC or AC circuit of DC control solenoids, power transmission devices and similar

Standards

- Design according to DIN EN 175301-803
- RoHS conform

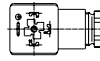
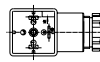


Fig. 1: type Z KB X 211 B01
Z KB G 211 B01

Technical data of the series Z KB X, Z KB G

Plug connectors may not be connected or separated under electric voltage.

Tightening torque of the central screw is 50 Ncm max. 60 Ncm

Type	Plug contacts Qty	Rated current (A)	Refer ence voltage (V)	Cable gland Size	Cable diameter (mm)	Max. cross- section lead ends	Rectifier Input max. ~230 V	Form	Dim. Fig.	Temp. range observe derating!
Z KB X 211 B01 ³⁾	3+ Protective Contact ³⁾	16 ¹⁾	250 AC 300 DC	PG 11 ²⁾	4,5 - 12	4 x 1,5 mm ²			7	-30 ... 90°C ³⁾
Z KB G 211 B01	2+ Protective Contact	1	250 AC/DC		4,5 - 11	3 x 1,5 mm ²	Output max. 205 V		6	-40 ... 90°C

1) The indicated current applies only for a reference temperature of 75°C for type Z KB X.

Ampacity for higher reference temperatures with connected cable diameter of 1.5 mm²
for plug connector Z KB X according to fig. 2

2) An adjustment to the cable diameter is possible by simple removing of the respective rubber bands (see fig. 6, 7)

3) The type with 3 contacts is also used for devices with 2 contacts

Information for the application of the types Z KB G with rectifier:

Please take care that the AC circuits are largely free of peak voltages. If big inductances and capacities are switched in close vicinity of the devices, it must be ensured that voltage peaks will be made ineffective by appropriate switching means (inductor or filter chains).

AC side switching should be the objective.

Connector load diagrams sockets without rectifier type Z KB X

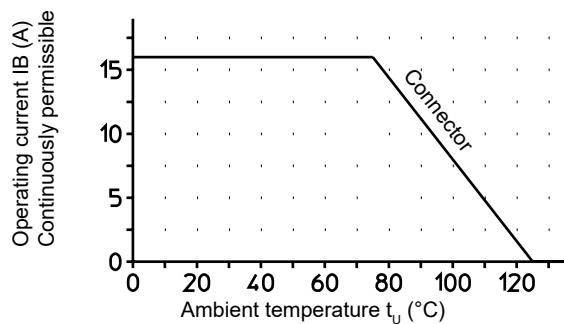


Fig. 2
Derating characteristic for the plug connector type Z KB X 211 B01

Diagrams and connection scheme for plug connectors with rectifiers type Z KB G

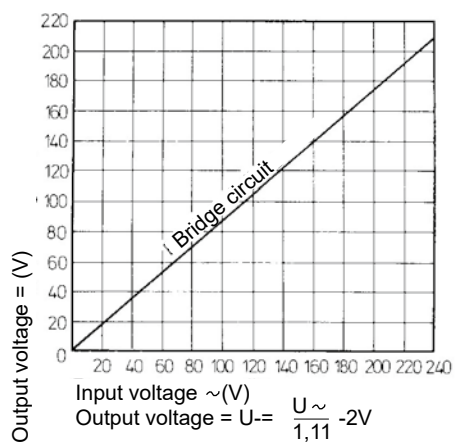


Fig. 3 MSM-Fo 0804.1386
Output voltage depending on the input voltage for the plug connector with rectifier type Z KB G 211 B01 type Z KC G 209 B01

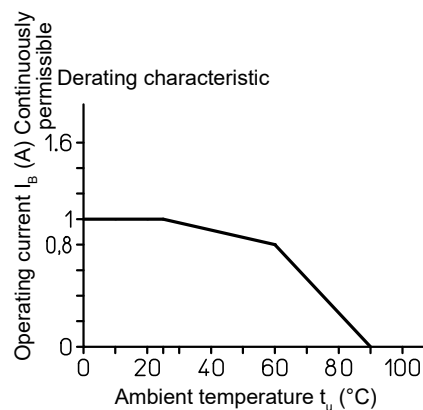


Fig. 4
Derating characteristic 100% ED for the plug connector with rectifier type Z KB G 211 B01

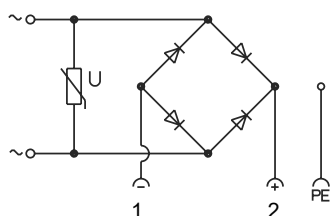


Fig. 5
Connection scheme
Plug connector with bridge rectifier
Type Z KB G 211 B01

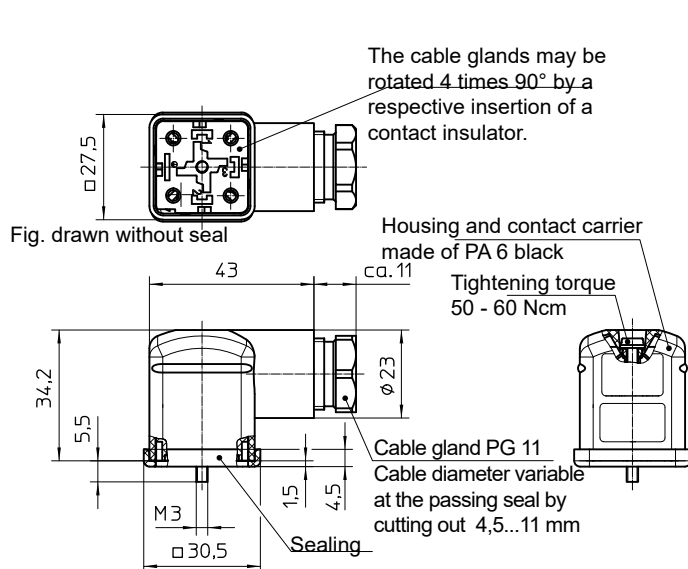


Fig. 6
Type Z KB G 211 B01

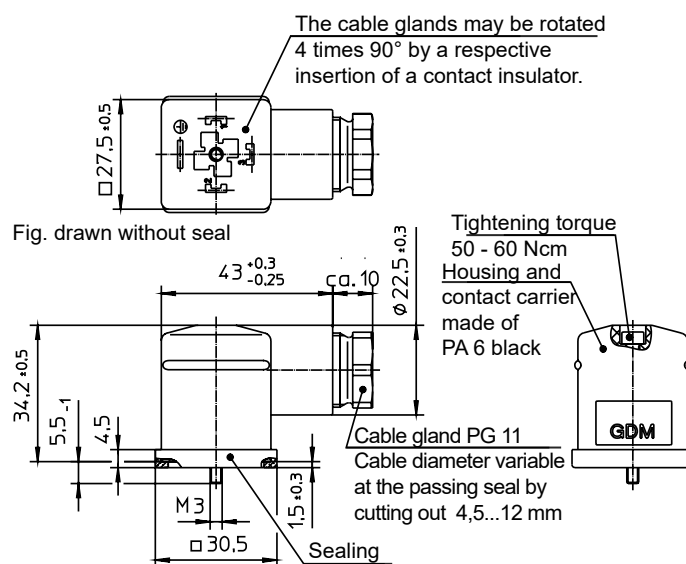



Fig. 7
Type Z KB X 211 B01

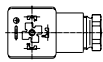
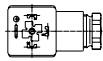
Information and remarks concerning European directives
can be taken from the correspondent information sheet which is
available under *Produktinfo.Magnet-Schultz.com*.

**Please make sure that the described devices are suitable for
your application. Our offers for these devices are based on
the assumption of maximal 8 in an FMEA severity table, i. e.
in case of malfunction of the device model as offered, there
is, amongst others, no jeopardy to life or limb. Supplementary
information concerning its proper installation can be taken
also from the  -Technical Explanation, the effective
DIN VDE0580 as well as the relevant specifications.**

This part list is a document for technically qualified personnel.

This publication is for information purposes only and is not to be
regarded as a binding representation of the products, unless this
is expressly confirmed by us.


Type code

Type	Form	Number of poles	Wiring	Supplier designation (Fa. Belden)
Z KB X 211 B01		3 + PE	without	GDM 310 B MSM incl. sealing NBR GDM 3-16
Z KB G 211 B01		2 + PE	bridge rectifier, varistor	GDM 210 B-V3U-10D black sealing NBR GDM 3-16

Order example

Type Z KB X 211 B01

Specials designs

Please do not hesitate to ask for our assistance with the solution
of your application-oriented task. In order to find rapidly a
reliable solution we need complete details about your application
conditions. The details should be specified as precisely as possible
in accordance with the relevant  -Technical Explanations.

If necessary, please request the support of our corresponding
technical office.